



**A joint letter from 14 environmental NGOs active in south eastern Australia, co-ordinated by the Chipstop Campaign <http://www.chipstop.savetheforests.org.au/> PO Box 797, Bega NSW 2550, Australia**

Mr Richard Allely  
Chief Executive Officer and Managing Director  
PMP Limited  
Level 12, 67 Albert Ave  
Chatswood NSW 2067

Dear Mr Allely

#### **RE: PURCHASE OF NIPPON PAPER PRODUCTS**

We are writing to you as conservationists fighting to protect Australia's remaining native forests.

Your company has been referred to in printing trade media in recent months as a customer of Nippon Paper products.

It has been reported that your company was a buyer of Nippon Paper products prior to the tsunami and may resume buying them once production returns to normal.

We are asking that you do not resume buying from Nippon Paper until it ceases using woodchips from native forests.

Nippon Paper is the owner of the South East Fibre Exports woodchip mill at Eden, NSW. Most of the production from that mill is exported to Nippon Paper mills in Japan. Eden is Australia's oldest woodchip mill. It has been highly controversial since its establishment in 1970. Since then it has been the driving force for untold destruction of native forest for hundreds of kilometres around the mill in south east NSW and East Gippsland (see attached photos).

To Australian forest campaigners it has enormous significance and symbolism because of its status as Australia's first and most destructive export woodchip mill.

Eden is the only region in NSW where trees are felled for the primary purpose of woodchipping, with over 90 % of native forest timber felled in the region ending up as woodchips.

*(Continued on page 2)*

*(Continued from page 1)*

After years of pressure, the chipmill has failed to respond to environmental concerns; indeed in the past few months it has built a pellet plant to convert residues of woodchipping into wood pellets and kitty litter.

It also has plans to build Australia's first power station fuelled mostly by native forest wood at the Eden chipmill.

If you would like any further information on any aspect of the chipmill's operations, we would be happy to supply this.

Nippon Paper in Japan in August 2011 announced plans to dramatically cut its production, so may not be a reliable supplier into the future in any case.

Paper production globally is moving rapidly towards recycled and plantation sources, and consumers are requiring paper products that are not sourced from native forests. Nippon has failed to respond to this reality, and instead continues to use native forest wood, resulting in widespread environmental impacts on our forests.

For the sake of Australia's forests and the environmental reputation of your company, we ask that you make a decision to source your paper either from soundly managed plantations, preferably with Forest Stewardship Council certification or from recycled material.

The groups represented in this letter are requesting an opportunity to meet with you to discuss this matter. I look forward to hearing from you.

Yours sincerely

**Harriett Swift**

Convener, Chipstop Campaign Against Woodchipping

02-649237267 , 0414908997

**On behalf of: South East Region Conservation Alliance Inc., The Last Stand, South East Forest Rescue, West Australian Forest Alliance, Chipbusters, Healesville Environment Watch Inc., Gulaga (Mt Dromedary) Protection Group, Bega Environment Network, Chipstop campaign, Friends of Durras, Environment East Gippsland, The Wilderness Society, C4 (Communities Combating Climate Crisis) Healesville, Forestmedia.**

14 October 2011



**Logging for Nippon Paper's Eden chipmill in SE NSW and East Gippsland, Victoria is not supported by the Australian community.**



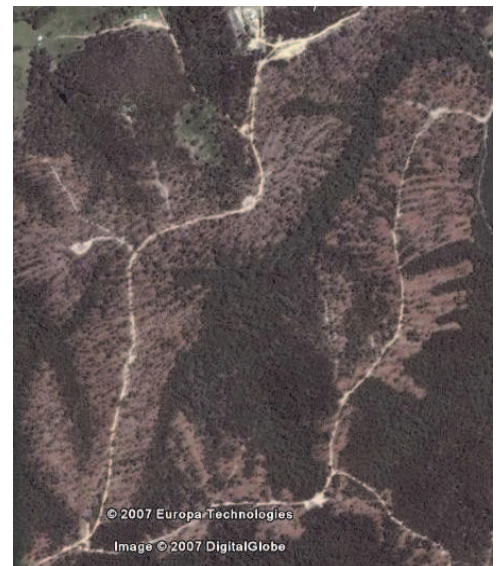
East Gippsland forest, Brown Mountain, after post logging burn.  
Photo: Judith Deland



One of the placards used against logging of Mumbulla State Forest (NSW) koala habitat, during a sustained 50 day community protest last year.



Log truck carrying a single tree from an East Gippsland forest.



Google Earth image of logged forest near Eden



Poster in current use by defenders of a forest near Bega which will be 80% woodchips for Nippon Paper.



NSW Forest, Gnupa near Eden, after recent logging.